

Changing Imaging Presets

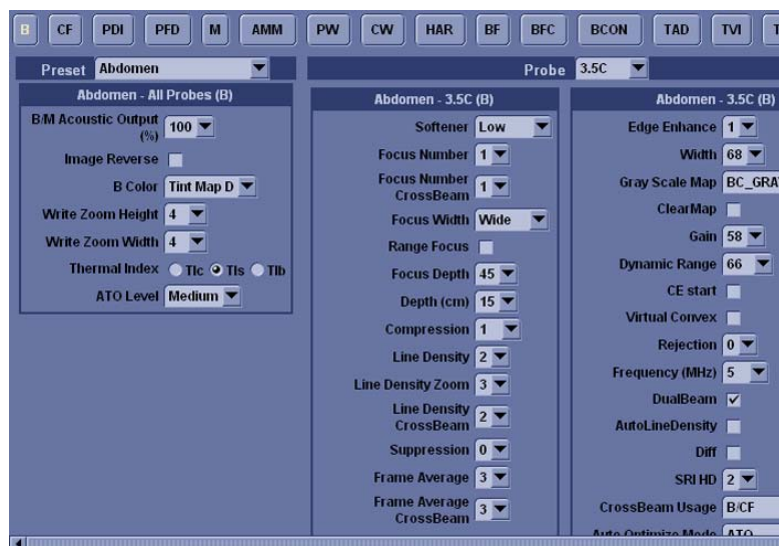
To change imaging presets:

1. On the Touch Panel, press **Utility**.
2. On the Touch Panel, press **Imaging**. See the Imaging screen below.
3. In the row of tabs across the top of the screen, select the mode.
4. In the *Preset* list, select the exam.
5. In the *Probe* list, select the probe.

The system displays two lists of parameters and settings. The left column lists all settings for the exam (for example, Abdomen). The right column lists settings that apply only to the exam and probe combination (for example, Abdomen and 3.5C).

6. To change a parameter, do one of the following:
 - Select the value from a list.
 - Select one value from a choice of two or more buttons.
 - Select or clear a check box.
7. After changing the parameters, to save the changes, press **Save**.

NOTE: If you have problems with imaging, you can return parameters back to the original settings. Select the exam, probe, and mode, and then select Reload Factory Defaults. The system returns the selected parameters to the original settings.

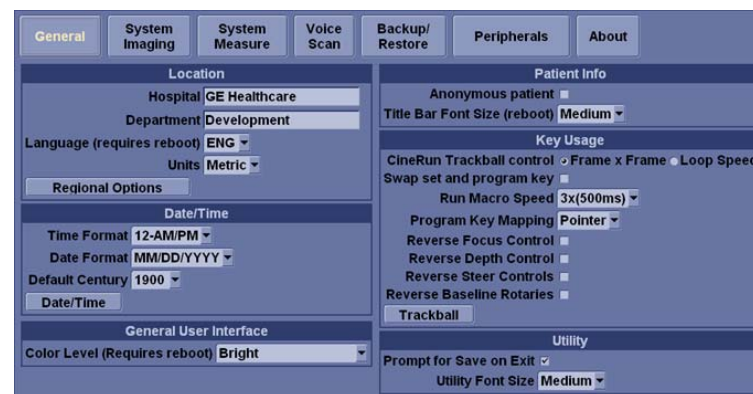


Entering Hospital Information and System Date and Time

To enter hospital, date, and time information:

1. On the Touch Panel, press **Utility**.
2. On the Touch Panel, press **System**. See the General screen below.
3. In the *Location* section, type the hospital name in the *Hospital* field.
4. In the *Date and Time* section, select values for the date and time fields.
5. To save the changes, press **Save**.

For more information about these preset functions, refer to the **LOGIQ 7/LOGIQ 7 Pro Basic User Manual**, Chapter 16 “Customizing Your System”.



Defining Annotation Libraries

To define annotations:

1. On the Touch Panel, press **Utility**.
2. On the Touch Panel, press **Comments**.
3. On the *Comments* tab, specify format information such as text color and pointer size.
4. Select the *Libraries* tab. See the Libraries screen below.
5. In the *Library* field, select the library you want.

The system displays all annotations for the library. You can have two Touch Panels of annotations for each library (Page1 and Page2). The annotations are listed in the order they are shown on the Touch Panel when you use annotations.

6. To change or add an annotation, place the cursor to the desired field and press **Set**, then do one of the following:

- Select the annotation in the *Copy from Existing* list, and press **Set**.
- Type the annotation.

7. To save the changes, press **Save**.

To create a new annotation library:

1. In the *User Defined Library* field, type a name for the library, then select **Create**. The system creates a new library.
2. Enter annotations as described in step 6 above.
3. To save the changes, press **Save**.

To specify which libraries belong to an application:

1. Select **Utility** --> **Applications** --> Comments.
2. In the *Preset* field, select the application.
3. In the *Tabs* fields, select the libraries for this application. You can select up to six libraries.
4. In the *Default Tab* field, select the default library you want the system to display when you use annotations.
5. To save the changes, press **Save**.

For more information about these preset functions, refer to the **LOGIQ 7/LOGIQ 7 Pro Basic User Manual**, Chapter 16 "Customizing Your System".

